

OWL EYE SYSTEM



What is the OWL EYE SYSTEM?

With the Owl Eye System you can record the volume of any bulk stockpile in whatever flat storage digitally and precisely. You would do this to achieve an automatical inventory or to optimize your processes.

In addition, the composition and age of the stockpile can be logged.

LiDAR (laser) sensors are installed and addressed automatically. The evaluated data are transferred to the intuitive Owl Eye dashboard and further via common interfaces to third-party systems, which are approved (e.g. ERP).

What does the OWL EYE SYSTEM offer?

- Volume accuracy: +/- 1%
- Operating range: 5m – 100m
- Applicability for indoor and outdoor application
- Measurement intervals determinable by yourself:
e.g. every 5 minutes or once a week
- Application devices:
desktop, tablet, mobile
- Where to install:
building walls, steel girders, masts
- Logging of the age or composition of individual components of the stockpile



It is an advantage to think digitally.

So think digitally, let us help to create your future .

Our Owl Eye System could be your first step to a digitalized warehousing process.

Conventional inventory of flat stores are based on:

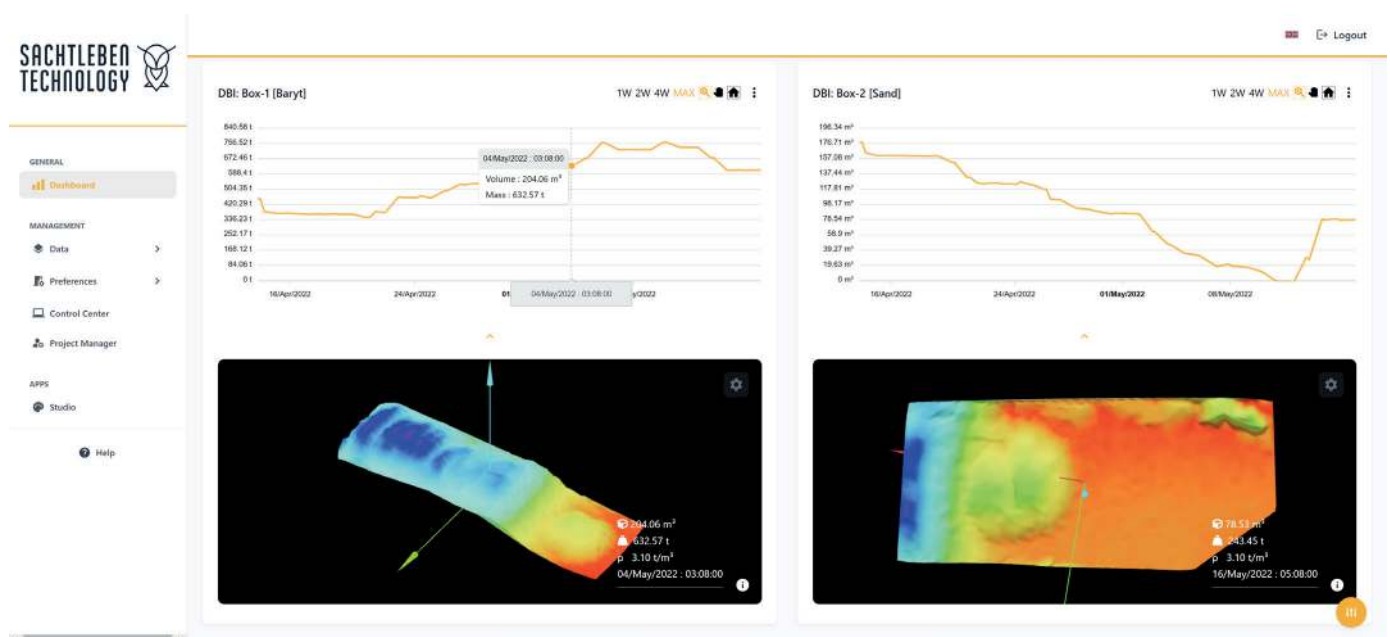
- Estimates
- Wheel loader and grapple bucket counts
- Weighing
- Input and output calculation

Problem: Book stocks quickly deviate from real stocks.

Purchasing: There are still 300 t in stock. – wheel loader driver: The stock is empty.

- Production plans have to be adjusted
- Commercial accounting has to make corrections
- Customers cannot be supplied on time

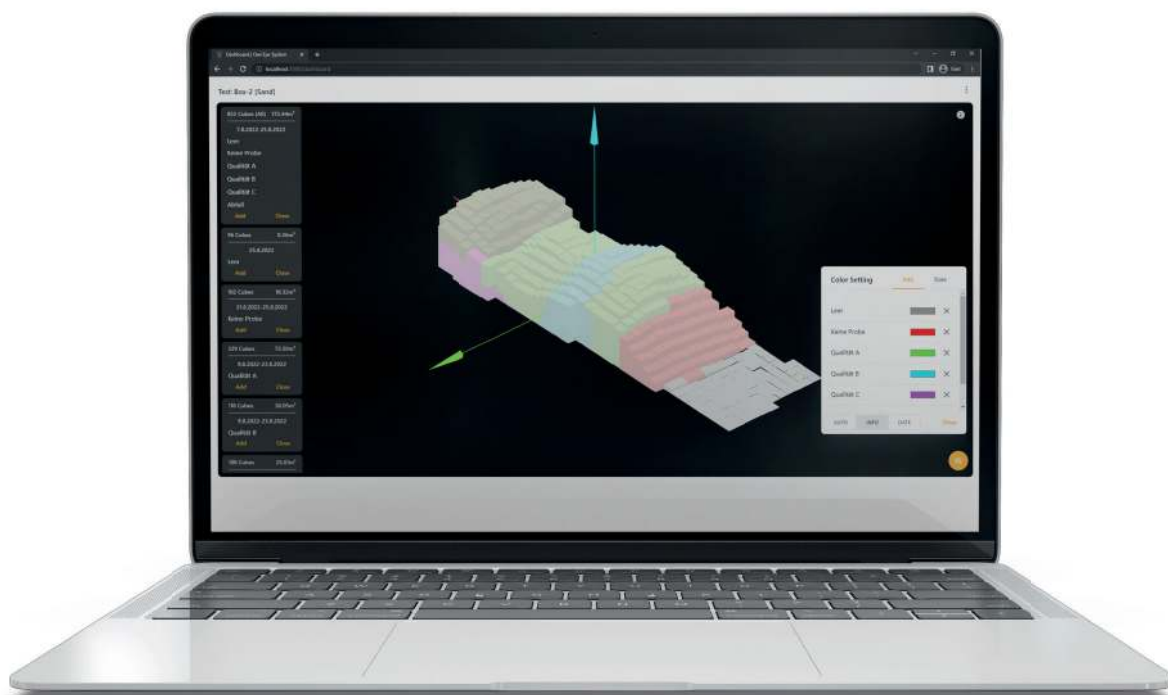
Decisions will be made based on facts rather than guesswork



The Stockpile History module helps you to log the composition of your stockpile. Assign any information such as the grade or the result of your chemical analysis to individual areas of the stockpile. The age is automatically recorded.

Know how your stockpile is composed:

- Your stockpile is divided into discrete blocks
- Each block of the stockpile has a measurement date after recording
- Assign any information to each block individually or grouped. For example, the grade, the chemical composition or that you have not yet taken a sample
- You can assign a color to each piece of information. This is then visualized in the stockpile and you have a direct overview of the composition
- Color the stockpile according to the age of the blocks - this gives you a direct overview of how old the individual components of your stockpile are
- Mark an area of the stockpile and see the composition, age and volume of the marked blocks at a glance

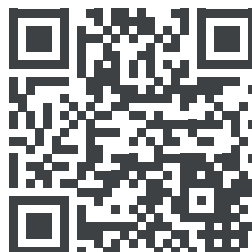


**We are your partner for the digitization of your warehouse.
With our Owl Eye System and the expertise of our team.
Improve recording and calculation of your bulk volume and reach a new level:
modern, digital, accurate.**



Sachtleben Technology GmbH

Bahnhofstraße 21-39
37431 Bad Lauterberg im Harz
+49 7831 969 22-190
info@sachtleben-technology.com
www.sachtleben-technology.com



A company of the:

SACHTLEBEN MINERALS 



Deutsche Baryt-Industrie



Sachtleben Bergbau